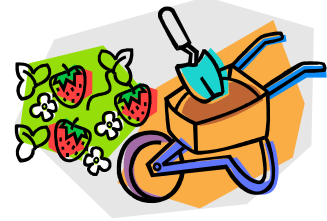


RESURRECTION LUTHERAN SCHOOL and NEIGHBORHOOD GARDEN



The school garden is becoming a reality! The children will have an outdoor learning space and will eat (hopefully) the fruits of their labor. We already have some wonderful help, but we need you, too. Here are some ways you can be involved:

WHAT: a **POT-luck** for the garden.

1. Bring extra **plants** from your garden as you thin them.
2. Donate **vegetable and flower seeds** you have left from your plantings.

WHAT: a tool party

1. Children need kid-sized real tools – **rakes, shovels, turning forks and trowels**.
2. Dirt is fun, but **gloves** are better.

WHAT: Garden accessories

1. **Stakes** for the pole beans and tomatoes.
2. **Water hoses** and **watering cans**
3. Help to make a **sign** and **plant labels** for the garden.

WHAT: \$ to purchase additional items.

There will be an area for neighborhood folks and church members to garden, too. A row of vegetables will be planted and reserved for the food bank.

Garden sponsors include: Resurrection Lutheran School (RLS), the Board of Outreach and Social Ministry (BOSM) and the Board of Fellowship (BOF) and members of Resurrection.

Just watch us grow!

